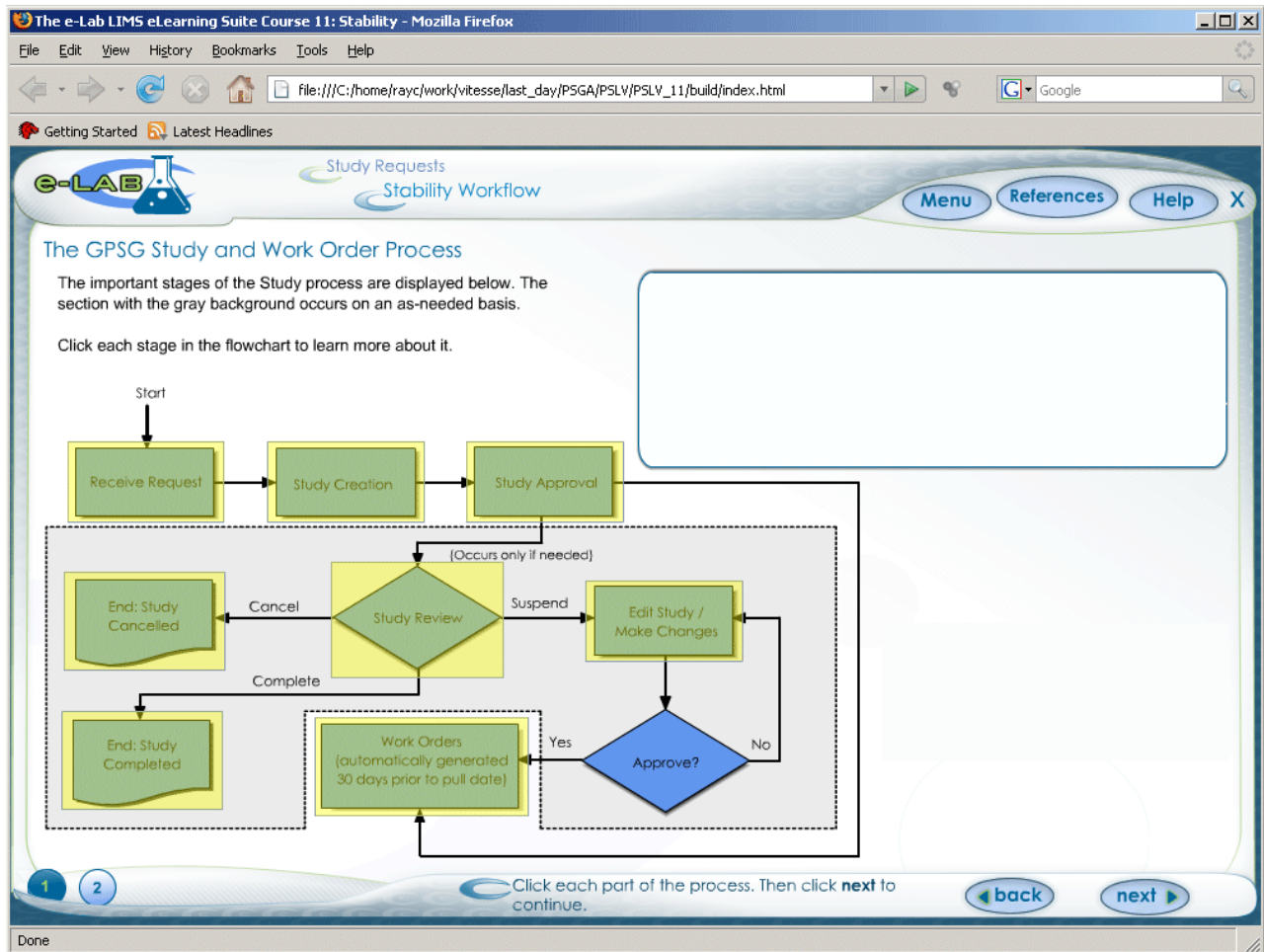


ITEC 715: Assignment 2—Screen Design Mockups

Here are some of the screens we've looked at in class so far:



http://www.geneed.com - GeneEd Web Training - Mozilla Firefox

GeneEd Biopharma Catalog Demo
DNA/RNA Structure

INTRODUCTION

LESSONS

- DNA/RNA Structure
- Sequence Alignment
- Monoclonal Antibodies
- Drug Targets
- Expression-Based Sequencing
- Microarray Fundamentals

Context

The basic informational molecule of life is DNA, the primary genetic material of most organisms. Elucidation of the structure of DNA is considered to be one of the pivotal events in molecular biology.

Understanding of the structure of DNA immediately gives rise to an explanation of how it conveys information during cell division (DNA replication), and how it can express the genes located along its length by converting the coding regions (the genes) to RNA and then to proteins. This lesson describes the structure of DNA.

Contents My Notes Continue

Volume Time 0:02 / 2:23

Transferring data from www.geneed.com...

http://www.asklearning.com - E-sales - Mozilla Firefox

Advanced Services Deal Management
The New 'Standard' Deal

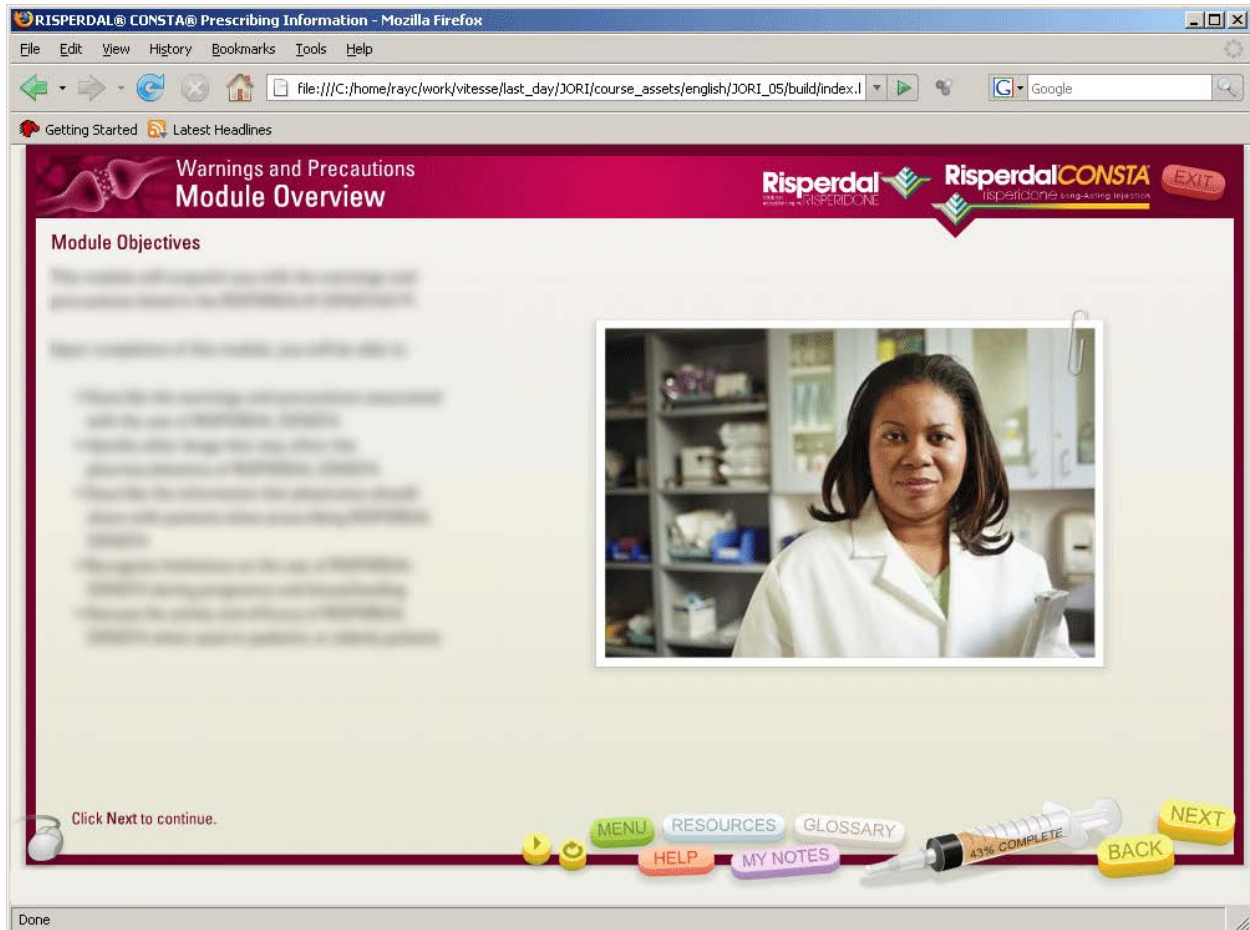
2- Why use Standard Deals? - Why

| Year | Revenue |
|------|-------------|
| 2005 | 650 million |
| 2008 | 1.5 billion |

Show Index

Page 4 of 18

Transferring data from www.asklearning.com...



In each screen, the controls, navigation (if present), and titles/location information are all located along the *edges* of the screen; course content is located in the *middle* of the screen.

Other elements present on most or all designs:

- **Next** and **Back** buttons—for navigating forward or backward through the course one page at a time
- *Either* a **Menu** button (if navigation is not permanently available on screen) *or* an area of the screen reserved for navigation that is permanently visible
- Information telling learners where they are in the course: Course Title (e.g., in the 4th screen, above: "Risperdal Consta"), Module Title (e.g., "Warnings and Precautions"), Topic Title (e.g., "Module Overview"), and Page Title (e.g., "Module Objectives")
- An on-screen direction (e.g., "Click **Next** to continue.")
- A **Help** button—usually links to a page that describes how to use the course controls
- A progress indicator that shows how far along the learner is in the course (e.g., the syringe, labeled "43% complete" in the Risperdal Consta course, or the "Page 4 of 18" in the Advanced Services Deal Management course)

Please include these elements in your three screen design mockups.

There are also some elements you should *not* include (because we won't be able to implement them with the tools we'll be using to build our e-learning courses in this class). Do not include any of the following:

- An **Exit** button
- Media controls (volume controls, play or pause buttons, etc.)

Bring your photoshop *.PSD files to class. You will turn them in this Thursday in class by copying them to the appropriate week's Student_Work folder on the class's shared network drive. Don't forget to name your layers!

See you Thursday!

-Ray

rayc@sfsu.edu (email me if you have questions)